
If you can not read this newsletter, please click [here](#).



steps forward
for the child with disability

April 2016

• • • •

SCIENTIFIC NEWS

• • • •

ΕΤΗΣΙΟ
ΕΠΙΣΤΗΜΟΝΙΚΟ
ΣΥΝΕΔΡΙΟ
ΕΛΕΠΑΠ

ΣΑΒΒΑΤΟ 25 ΙΟΥΝΙΟΥ 2016
09:00 - 17:30
Στέγη Ιδρύματος Ανάση
Μικρή Σκηνή
Α. Συγγρού 107 - 109

ΜΕ ΤΗΝ ΥΠΟΣΤΗΡΙΞΗ

Ιδρυμα
Ανάση

ΙΝ/ΣΝΕ
ΙΔΡΥΜΑ ΣΤΑΥΡΟΣ ΝΙΑΦΟΣ
STAVROS NIARCHOS
FOUNDATION

ΥΠΟ ΤΗΣ ΑΙΓΙΔΑ ΤΟΥ
ΥΠΟΥΡΓΕΙΟΥ ΥΓΕΙΑΣ

ΧΟΡΗΓΟΣ ΕΠΙΚΟΙΝΩΝΙΑΣ
Η ΚΑΘΗΜΕΡΙΝΗ

ΤΟ ΣΥΝΕΔΡΙΟ
ΑΣΙΟΛΟΓΕΙΤΑΙ ΜΕ ΜΟΡΙΑ ΟΕΜΣ

ΔΙΟΡΓΑΝΩΣΗ:
ΕΛΛΗΝΙΚΗ ΕΤΑΙΡΙΑ ΠΡΟΤΑΣΙΑΣ
& ΑΠΟΚΑΤΑΣΤΑΣΕΩΣ ΑΝΑΠΗΡΩΝ ΠΡΟΣΩΠΩΝ

www.elepap.gr

ΤΟ
ΒΙΟΨΥΧΟΚΟΙΝΩΝΙΚΟ
ΜΟΝΤΕΛΟ
ICF
ΣΤΗΝ
ΕΛΕΠΑΠ

ΒΙΟΨΥΧΟΚΟΙΝΩΝΙΚΟ ΜΟΝΤΕΛΟ ICF ΣΤΗΝ ΕΛΕΠΑΠ

ΒΙΟΨΥΧΟΚΟΙΝΩΝΙΚΟ ΜΟΝΤΕΛΟ ICF ΣΤΗΝ ΕΛΕΠΑΠ

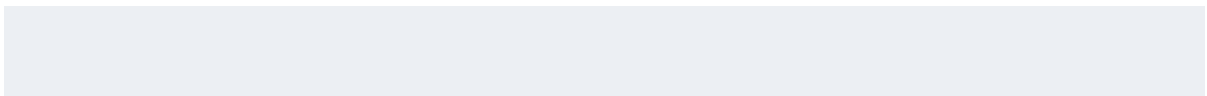
ΑΔΡΕΑΝ ΣΥΜΜΕΤΟΧΗ
ΘΑ ΤΗΡΘΕΙ ΣΕΡΑ ΠΡΟΤΕΡΑΙΟΤΗΤΑΣ
ΔΗΛΩΣΕΙΣ ΣΥΜΜΕΤΟΧΗΣ ΜΕΧΡΙ 30 ΜΑΪΟΥ

Πληροφορίες και Αίτηση Συμμετοχής:
210 - 6988978 - 6949784684

Γραμματεία Συνεδρίου:
ALTERCOM
Κ. Αλεξίου & Ι.Σ.Σ. & Α.Α.Α.
Τηλ: 210 6988978
email: altercom.gr@gmail.com
www.altercom.gr

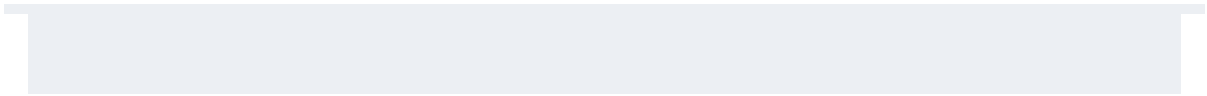
ELEPAP Annual Congress entitled: “The Biopsychosocial Model ICF applied to ELEPAP” Saturday, June 25, 09:00-17:30
Venue: Onassis Cultural Centre - Athens.

[Read more](#)



Participation of ELEPAP in the international Congress with the title “The Power of Parenting and Practice-Early Intervention in the Light of ICF-CY”, Holland, April 7-9.

[Read more](#)





Music therapy, "Theory and Practice", a conference for music, ELEPAP, Volos, April 9.

[Read more](#)



ELEPAP in the awards ceremony / praises of Ecomobility, April 14.

[Read more](#)



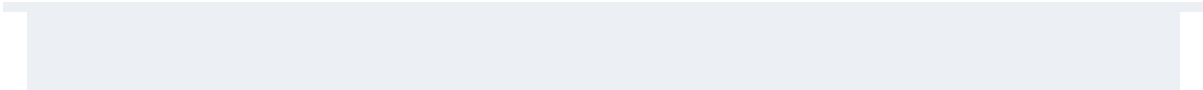
ELEPAP participates in Liquid Vibrations course in the frame of the Borderline Festival 2016, Onassis Cultural Centre - Athens, April 6-8.

[Read more](#)



ELEPAP participates in the “Nurturing Parents - A Mindfulness Based Parenting Program” - Tavistock and Portman NHS Foundation Trust, April 9.

[Read more](#)





Pool Therapy Workshop, ELEPAP, Thessaloniki New Department for learning disabilities and staff April 14.

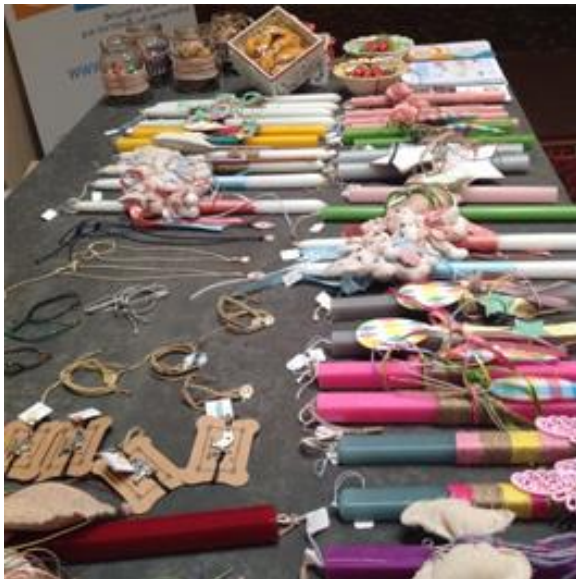
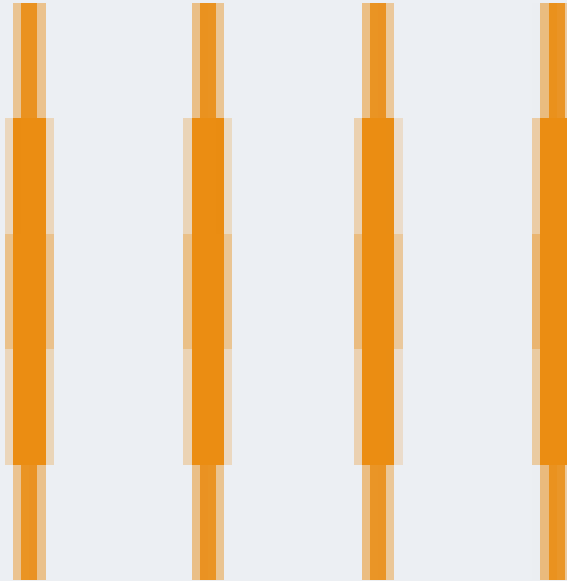
training seminars at ELEPAP, Thessaloniki, April 2016.

[Read more](#)

[Video: “learning disabilities”](#)

[Read more](#)

CSR ACTIVITIES - CORPORATE SOCIAL RESPONSIBILITY



KPMG welcomed ELPAP-ARTemeis to their 2nd

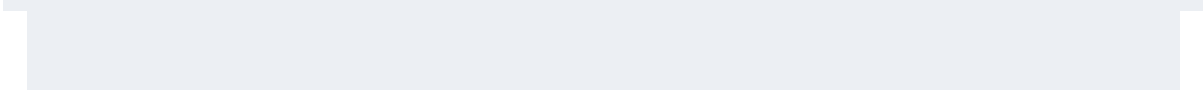
Family Forum, April 12.

[Read more](#)



ELEPAP- ARTemeis at the PwC Easter Bazaar,
April 20.

[Read more](#)





Easter Bazaar, ELEPAP, Agrinio, April 11-27.

[Read more](#)



RUN & FUN for a good cause, ELEPAP, Agrinio,
April 3.

[Read more](#)

Alexandra Gravas, renowned soprano, gives a recital
for ELEPAP, Ioannina, April 20.

[Read more](#)



"Music loves autism" by Onassis Cultural Centre -
Athens travels to ELEPAP Branch of Chania, March
18, 19 and 20 and Ioannina on March 9, 16 and 17.

[Read more](#)

ELEPAP Ioannina: Bazaars at the Guard Officers Club, the Primary Schools of Academia and the University Hospital, April 18-20 and 22.

[Read more](#)





ARTemeis Easter Kiosk at Golden Hall, Athens,
April 14-28.

[Read more](#)

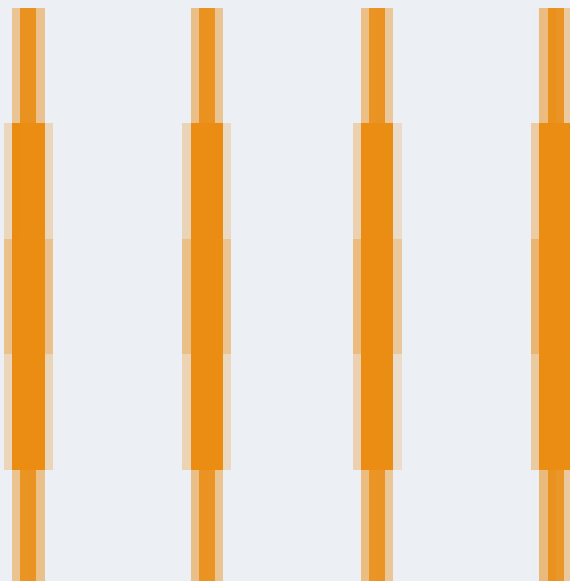


Easter Bazaar from the volunteers of ELEPAP
Athens at The Y Hotel, April 22.

[Read more](#)



ELEPAP CHILDREN AND ADULT ACTIVITIES



Activities of the Children of ELEPAP Athens,
Early Therapeutic and Educational Intervention
Program: Visit the Museum of Experiments.
Preparation of Easter decorations.

[Read more](#)



Music event “20 years without Elytis” organized by the music school of Ioannina, ELEPAP, April 13.

[Read more](#)

News from the Department of “Vocational Training and Day Care” and the Early Intervention of ELEPAP, Thessaloniki.

[Read more](#)

ANNOUNCEMENTS





Pastra Cretonaxiosa crosses the English Channel
for ELEPAP, August 28

www.pastracretonaxiosa.gr

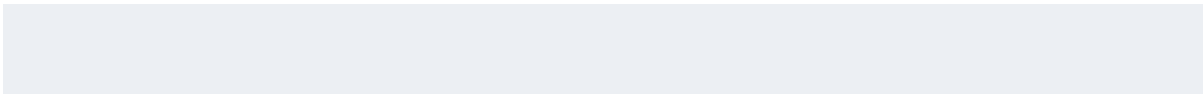
To support the effort:

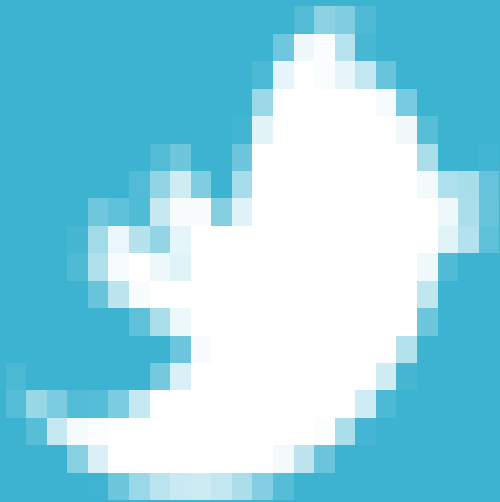
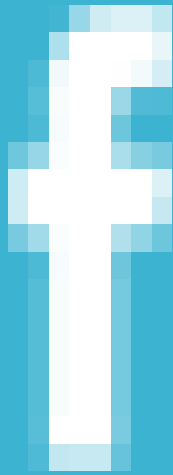
National Bank of Greece: 127 48009664

IBAN: GR32 0110 1270 0000 1274 8009 664

SWIFT BANK (BIC) ETHNGRAA

[Read more](#)





ELEPAP, Kononos 16,
116 34 Athens,
+302107228360
If you wish to
unsubscribe from
ELEPAP News click
here.

